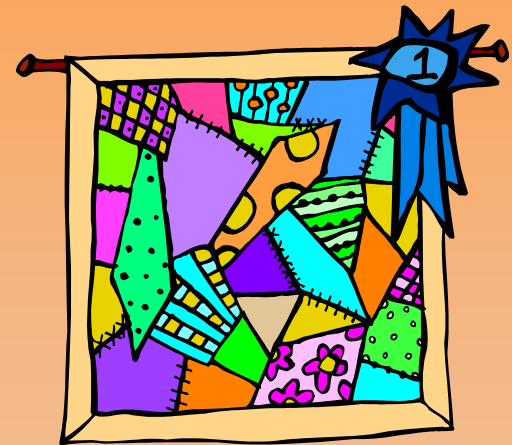


# POWHATAN COUNTY FAIR EXHIBITS



***September 23-26,  
2010***

## POWHATAN COUNTY FAIR

### *GENERAL RULES*

#### *Adult & Youth Exhibits*

Exhibitors must be residents of Powhatan, Cumberland and Goochland. All articles for exhibition must be entered in the name of the person doing the work, and with the signature of parent or guardian. Articles must be the handiwork of the Exhibitor and completed within the last year.

List all articles on entry form according to Section and Class. An Exhibitor may enter up to 12 items with only item entered per class.

Exhibitors must name articles entered in Exhibitors Choice on entry form.

Articles are entered on the Judge's Books according to the Section and Class Number submitted by the Exhibitor. In the event an error is made by the Exhibitor, the article will be disqualified.

Exhibitor must retain duplicate part of entry tag to claim item(s) at close of Fair. No article will be released without duplicate part of entry tag.

Articles entered for exhibition may be brought to the County Fair on Wednesday, September 22, from 4 to 7 p.m. and Thursday, September, 23 from 9 to 11 a.m. Judging will take place Thursday, September 23 at 1p.m. Items will be on display from Thursday, September 23 through Sunday, September 26, 2010.

Every possible care will be taken to protect the exhibits. All articles will be entirely under the control and jurisdiction of the Powhatan Fair Association until after the close of the Fair.

The Fair assumes no responsibility in case of loss or damage to exhibits from any cause, and upon this condition only, are entries received.

Any insurance desired on the entry must be carried by the Exhibitor. No Exhibitor will be allowed to remove, handle or rearrange the exhibit.

No ribbon will be awarded in any case where exhibits are unworthy. Where there is only one exhibit in a class, a ribbon of its merit will be awarded.

If space does not permit a display of all materials, those without ribbons will be stored until day of return.

All exhibits must be picked up Sunday, September 26, between 1:30-3:30 p.m.

*For further information and questions please contact;*

*Arla Halpin*

*Family and Consumer Science Program Associate*

*Powhatan County Extension Office*

*3872 Old Buckingham Road, Powhatan, VA 23139*

*Phone: 598-5640 ext. #3*

*Fax: 804-598-2477*

*Email: arlah3@vt.edu*

*"Strengthening Our Community With Unity"*



*Invent the Future*

**Virginia Cooperative Extension**

*A partnership of Virginia Tech and Virginia State University*

[www.ext.vt.edu](http://www.ext.vt.edu)

VIRGINIA STATE UNIVERSITY



Virginia Cooperative Extension programs and employment are open to all, regardless of race, color, national origin, sex, religion, age, disability, political beliefs, sexual orientation, or marital or family status. An equal opportunity/affirmative action employer. Issued in furtherance of Cooperative Extension work, Virginia Polytechnic Institute and State University, Virginia State University, and the U.S. Department of Agriculture cooperating. Rick D. Rudd, Interim Director, Virginia Cooperative Extension, Virginia Tech, Blacksburg; Alma C. Hobbs, Administrator, 1890 Extension Program, Virginia State, Petersburg.

*Thank you for your  
participation in the  
Powhatan County Fair  
Exhibits!*

# YOUTH EXHIBITS

## YOUTH EXHIBITS

### Special Notice Age Divisions

Sections marked will be divided as follows: Section A; ages 5-8, section B; ages 9-13, section C; ages 14-18

Be sure proper age division is indicated on your entry card. Ages as of August 1, 2010

### ARTS & CRAFTS

#### Section 1 Painting & Drawing

1. Charcoal, Pencil & Ink
2. Crayon
3. Oil Paste/Chalk
4. Oil Sticks
5. Oil Painting
6. Pastel
7. Tempera or Acrylic
8. Water Color
9. Exhibitor's Choice

#### Section 2 Fiber Art

10. Stitched Embroidery
11. Liquid Embroidery
12. Needlepoint
13. (plastic canvas)
14. Crocheting
15. Knitting
16. Exhibitor's Choice

#### Section 3 Decorated Wear Art

17. Bags
18. Shoes
19. Sweatshirt
20. Tee Shirt

21. Visor
22. Exhibitor's Choice

#### Section 4 Sewing

23. Apron
24. Pillow
25. Quilted Article
26. Exhibitor's Choice

#### Section 5 Jewelry

27. Clay Jewelry
28. Mixed Media Jewelry
29. Bread Dough Jewelry
30. Macramé Jewelry
31. Metal Jewelry
32. Exhibitor's Choice

#### Section 6 Crafts

33. Sand Art
34. Candle Making
35. Decoupage
36. Mosaics
37. Egg Craft
38. Stained Glass
39. Batik or Tie Dye other than
40. Garment
41. String Art
42. Trash to Treasure
43. Puppets
44. Stocking
45. Wall Hanging
46. Paper Mache
47. Stenciled Article
48. Handmade Candle
49. Silk Flower Arrangement
50. Wall Arrangement
51. Exhibitor's Choice

313. Staghorn Fern ( Playcerium)
314. Swedish Ivy (Playcerium)
315. Spider or Airplane Plant
316. Tahitian Bridal Veil
317. Bolivian Jew
318. Wandering Jew, not listed above
319. Gesneriad (Columneas, Lipstick Plant, Achimines, Epuscua, etc.)
320. Flowering Plant, not listed
321. Foliage Plant, not listed
322. Mixed Basket or Dish Garden with  
3 or more types of plants
323. Cut Flowers in Clear Container

#### X. Section 22- Woodworking

*Item will be considered for use in one of the following categories;*

324. Farm or home workshop
325. Outdoor / Patio Furniture
326. Storage
327. In home
328. Toy
329. Homemade game
330. Bird house/ bird feeder
331. Furniture
332. Doll house
333. Miniature
334. Wood Carving
335. Exhibitors Choice

258. Okra
259. Onions (Mature), bulbs
260. Peppers, Hot (Matured)
258. Peppers, Sweet
259. Radishes, 1-inch stem
260. Snap Beans (green)
261. Snap Peas (yellow wax)
262. Spinach – cut at crown
263. Squash, summer
264. Squash, winter
265. Sunflower (1 head), best
266. Tomatoes, red ripe
267. Tomatoes, yellow ripe
268. Turnips, roots, tops removed
269. Turnip Salad, 3 plants/roots
270. Watermelon (1)
271. Gourds
272. Display of Ornamental Gourds  
(3 or more)
276. Display of Indian Corn
277. . Display/Decorated Gourds (3)
278. Mixed Vegetable Basket
279. Exhibitor's Choice, vegetables
280. Red Apples
281. Yellow Apples
282. . Pears
283. Mixed Fruit Basket (1 each)
284. Mini Vegetables
285. Exhibitor's Choice, Fruit

#### V. Section 20 – Potted Plants

*Special Rules: Plants must have been grown by the Exhibitor and established in a container for at least 3 months. Plant and container weighing more than 40 pounds will be disqualified. Plants or Hanging Baskets will be judged on same criteria. Please include the plant name on the back of the entry tag.*

286. Fichus
287. Spathiphyllum (Peace Lilly)
288. Schefflera
289. Palm Tree
290. Dracaena (TI, Cord line, etc.)
291. Philodendron or Monstera (not including Photos or Devil's Ivory)
292. Aroids, including Anthurium, Alocasia, etc. (not listed separately)
293. Maranta, Ctenanthe Prayer Plant
294. Agiaonema or Dieffenbachia
295. Photos or Syngonium
296. Nephthis (hanging plants permitted)
297. Pilea (Aluminum Plant, Friendship Plant, Artillery Fern, etc.)
298. Peperomia
299. Sultana (Impatiens in bloom)
300. Coleus
301. Ponytail Palm (Beaucarnea)
302. Jerusalem Cherry (1 plant/pot)
303. Ornam, Pepper (1 plant/pot)
304. Asparagus Fern (not hanging)
305. Carnivorous Plant (not collected)
306. Mounted Plant (not listed separately)
307. Flowering Plant (not listed, potted)
308. Foliage Plant (not listed separately)

#### W. Section 21 – Hanging Baskets

309. Aloe Plant
310. Asparagus Fern
311. True Fern (excluding Staghorn, 7-footed)
312. Footed Ferns (Bear and Rabbit Foot, etc.)

## YOUTH EXHIBITS

### Section 7 Photography

#### BLACK & WHITE OR COLOR PRINTS

*Only one entry per entrant per class. Photo must be entrants own work and must have been taken since July 1, 2009. Prints may be made by a commercial printer.*

*All prints must be on a white mat with a minimum of a 2 inch border.*

*Entry tags must be securely attached to upper left hand corner (facing picture).*

#### Guidelines for Judging:

- A. Impact
  - B. Composition
  - C. Lighting
  - D. Simplicity
52. Photos-Parents, Children, Youth
  53. Still Life
  54. Landscape & Scenic
  55. Pictorial (8x10 or 5x7)
  56. Animals
  57. Fin/Fur/Feather

#### BAKED GOODS

*Special Rules: Breads must be baked in a standard loaf pan and place in a clear plastic bag.*

### Section 8 Bread

#### Age A, B or C

58. ½ loaf bread, any kind
59. ½ Coffee cake (any form desired)
60. ½ dozen Sweet rolls or buns
61. ½ loaf Sweet bread cinnamon, raisin, etc.
62. ½ loaf Fruit bread (date, banana, etc.)
63. ½ dozen rolls, any shape

64. ½ dozen biscuits
65. ½ dozen muffins
66. Exhibitor's Choice

### Section 9 Cakes Age A, B or C

#### Special Rules:

*All cakes must be on a cardboard base not to exceed 12 inch square, and covered with plastic. Tags should be securely attached to base. Only ½ required.*

67. Gingerbread
68. Pound Cake, Vanilla flavoring, un-iced
69. Pound Cake, un-iced
70. Coconut Cake
71. Vanilla or White Cake iced
72. Chocolate iced layer cake, white or yellow batter
73. Carrot Cake  
Iced Cake (decorated with tube may be done on form)
74. ½ dozen brownies (iced)
75. ½ dozen cupcakes
76. Exhibitor's Choice, any other (name cake)

### Section 10 Cookies Age A, B or C

#### Special Rules:

*Place on white paper plate*

77. ½ dozen Chocolate Chip
78. 1½ dozen Peanut Butter
79. ½ dozen Sugar
80. ½ dozen cookies, any other (name cookies)

## YOUTH EXHIBITS

### Section 11 Pies Age A, B or C

*Special Rules:*

Use Non Returnable Containers

No Meringues

81. Any pie (name pie)

### Section 12 Candy Age A, B or C

82. Molded  
83. Chocolate  
84. Fudge  
85. Exhibitor's Choice

### Section 13 Canning/Preserves

#### Age A, B or C

86. Any vegetable or fruit, Exhibitor's Choice

### Section 14 Flowers/Plants Age A, B or C

87. Potted Plants  
89. Flower arrangements, dried  
90. Flower arrangements, live  
91. Cut flower (in clear glass container)  
92. Exhibitor's Choice

### Section 15 Fruits and Vegetables

#### Age A, B or C

93. Any vegetable or fruit

### Section 16 Poetry Age A, B or C

94. Your own original work typed or printed on plain white paper with your name on the back of paper.

### Section 17 Wood Working Age A, B or C

95. Wood Carving ( Age B & C only)  
96. Wood Construction  
97. Wood Toy  
98. Wood Burning  
99. Bird Feeder  
100. Bird House  
101. Exhibitors Choice

### Quick Breads

207. Biscuits, ½ dozen  
208. Fruit or Nut Bread  
209. Quick Bread, any other  
210. Coffee Cake  
211. Batter Bread  
212. Exhibitor's Choice

### Yeast Bread

213. ½ Loaf Bread, White  
214. ½ Loaf Bread, Wheat or other  
215. ½ Dozen Dinner Rolls  
216. Coffee Cake or Tea Ring Cake  
217. Yeast Bread, any other kind

### Q. Section 15 – Cookies

*Special Rules:*

*Place ½ dozen cookies on a paper plate*

218. Brownies  
219. Chocolate Chip  
220. Sugar Cookies  
221. Bar Cookies  
222. Oatmeal Cookies  
223. Ice Box Cookies  
224. Peanut Butter Cookies  
225. Decorated Cookies  
226. Sugar-Free Cookies  
227. Any other cookies

### R. Section 16 – Cakes

228. Pound Cake (un-iced)  
229. Chocolate Iced Layered Cake  
230. White or Yellow-Battered Cake  
231. Carrot Cake  
232. Novelty (Shape or design)

233. Exhibitor's Choice, any other cake

### S. Section 17 – Pies

234. Cherry Pie  
235. Lemon Chess Pie  
236. Coconut Pie  
237. Apple Pie  
238. Pecan Pie  
239. Pie not mentioned

### T. Section 18 – Candy

240. Molded  
241. Chocolate  
242. Fudge  
243. Exhibitor's Choice

### U. Section 19 – Garden

#### Vegetables & Home Fruits

*Special Rules: Three of each vegetable on a paper plate unless otherwise noted.*

244. Beets, 1-inch stem  
245. Cabbage, 1 head  
246. Carrots, roots, 1-inch top  
247. Ear Corn, Sweet (un-husked and trimmed)  
248. Cucumber, slicing  
249. Cucumber, small pickling  
250. Eggplants  
251. Grapes  
252. Herbs, display of  
253. Kale, curly - cut at crown  
254. Collard Greens, cut at crown  
255. Mustard Greens, cut at crown  
256. Sweet Potato  
257. Lima Beans – small, fresh and unshelled

- 154. Strawberry Preserves
- 155. Mixed Fruit Preserves
- 156. Watermelon Rind Preserves
- 157. Preserves, any other name
- 158. Grape Jam
- 159. Blackberry Jam
- 160. Any other fruit (name)
- 161. Mixed Fruit Jam
- 162. Strawberry Jam
- 163. Cherry Jam
- 164. Raspberry Jam
- 165. Jam, any other name
- 166. Conserve – any flavor
- 167. Sugar-Free – any flavor
- 168. Chutney

**N. Section 12 – Pickles, Relishes and Catsup**

- 169. Pickled Beets
- 170. Sliced Cucumber Pickle
- 171. Bread & Butter Pickle (Sweet)
- 172. Dill Pickle
- 173. Sweet Mixed Pickle
- 174. Chow Chow
- 175. Relish, any flavor
- 176. Green Tomato Pickle
- 177. Watermelon Rind Pickle
- 178. Pickle, any other name
- 179. Tomato Catsup
- 180. Sauce – Salsa
- 181. Sauce – Spaghetti
- 182. Sauce – Chili
- 183. Sauce – any other name

**O. Section 13 – Canned Foods**

**Fruits & Vegetables**

- 184. Pie Filling – any flavor
- 185. Apples, sliced or quartered
- 186. Apple Sauce
- 187. Blackberries
- 188. Cherries (red or white)
- 189. Peaches
- 190. Pears
- 191. Plums
- 192. Raspberries
- 193. Butter Beans or Lima Beans
- 194. Beets
- 195. Carrots
- 196. Corn
- 197. Peas
- 198. Peas (Black-eyed)
- 199. Peppers
- 200. Snap Beans
- 201. Tomatoes (whole in water)
- 202. Tomatoes (whole in juice)
- 203. Vegetables – any other name
- 204. Tomato Juice
- 205. Vegetable Soup Mixture
- 206. Exhibitors Choice

**P. Section 14 – Breads**

*Special Rules:*

*All baked goods become the property of the Powhatan County Fair. Breads must be baked in standard loaf pan. All breads must be in plastic bags with entry tags securely attached. Winners must be willing to submit recipes on request.*

*See score card for all baked goods. See General Rules for judging criteria. ONLY ONE HALF LOAF IS REQUIRED.*



# ADULT EXHIBITS

122. Exhibitor's Choice

## L. Section 11 – Photography

### Black & White/Color

*Special Rules: Only one entry per entrant per class. Photo must be entrant's own work and must have been taken since July 1, 2009. Prints may be made by commercial printer.*

*All prints must be on a white mat with a minimum of a 2-inch border. NO FRAMED PHOTO WILL BE ACCEPTED.*

*Entry tags must be securely attached to upper left hand corner (facing picture) on the back of each picture, so that tag will hang over top of picture.*

### Guidelines for Judging:

- a. Impact
- b. Composition
- c. Lighting
- d. Simplicity

123. Portrait – Parents, Children & Youth
124. Still Life
125. Landscape & Scenic
126. Pictorial (8x10 or 5x7)
127. Animals
128. Fin/Fur/Feather (8x10 or 5x7)

## CANNING & BAKED GOODS

### *Special Rules:*

*Entries must be in clear quart jars, pint jars or half-pint jars.*

*Only standard canning jars are permitted. NO cloth decoration on jars. Jars must be sealed with jar ring left on. Score card for all canned goods. See General Rules.*

## N. Section 12 – Preserves, Jellies, etc.

129. Apple Jelly
130. Blackberry Jelly
131. Grape Jelly
132. Mint Jelly
133. Mixed Fruit Jelly
134. Raspberry Jelly
135. Strawberry Jelly
136. Peach Jelly
137. Plum Jelly
138. Pepper Jelly
139. Jelly, any other name
140. Apple Butter
141. Peach Butter
142. Fruit Butter, any other name
143. Orange Marmalade
144. Marmalade, any other name
145. Blackberry Preserves
146. Cherry Preserves
147. Grape Preserves
148. Fig Preserves
149. Damson Preserves
150. Peach Preserves
151. Pear Preserves
152. Plum Preserves
153. Raspberry Preserves

### E. Section 5 – Wearable Art

59. Bags – Quilted
60. Bags – Other Material
61. Sweatshirt
62. Tee Shirt
63. Jewelry
64. Vest
65. Exhibitor's Choice

### F. Section 6 – Crafts

66. Silk Flower Arrangement
67. Dried Flower Arrangement
68. Wall Arrangement
69. Decoupage
70. Egg Craft
71. Macramé (Any Item)
72. String Art
73. Calligraphy
74. Leaded Glass
75. Stained Glass
76. Flag or Banner
77. Stocking
78. Door Arrangement
79. Wall Hanging
80. Basket Weaving
81. Trash to Treasure
82. Stenciled Article
83. Handmade Candle
84. Handmade Soap
85. Exhibitor's Choice

### G. Section 7 – Holiday Crafts

86. Silk Flower Arrangement
87. Dried Flower Arrangement
88. Wall Arrangement
89. Wall Hanging

90. Door Arrangement
91. Decoupage
92. Egg Craft
93. Macramé
94. String Art
95. Calligraphy
96. Leaded Glass
97. Flag or Banner
98. Stained Glass
99. Stocking
100. Tree Ornaments
101. Christmas Wreath
102. Christmas Decorations
103. Tree Skirt
104. Exhibitor's Choice

### H. Section 8 – Sewing

105. Pillow
106. Quilt
107. Exhibitor's Choice

### K. Section 9 – Painting

108. Oil Painting
109. Acrylic Painting
110. Watercolor
111. Pastels
112. Ceramic Article, Art Glaze
113. Ceramic Article, Hand-Molded
114. Hand-Painted Article
115. Piece of Sculpture
116. Tole Painting
117. Acrylic Painting on Canvas
118. Painting on Glass
119. Oil Painting on Glass
120. Charcoal, Pencil & Ink
121. Painting on Wood

## ARTS AND CRAFTS

### A. Section 1 – Crocheting

1. Household Accessory (1-3 pieces)
2. Afghan
3. Baby Set (1-2 or 3 piece) (Age 0-12 mos.)
4. Baby Afghan
5. Fashion Accessories
6. Doll Clothes
7. Decorations
8. Pillow/Cover
9. Sweater
10. Exhibitor's Choice

### B. Section 2 - Knitting

11. Household Accessory (1-3 pieces)
12. (1-3 pieces)
13. Afghan
14. Baby Set (1, 2 or 3 piece)
15. Baby Afghan
16. Fashion Accessories
17. Sweater
18. Pillow/Cover
19. Gloves/Mittens
20. Exhibitor's Choice

### C. Section 3 Embroidery & Needlework

30. Tatting
31. Counted Cross Stitch
32. Stamped Cross Stitch
33. Needle Point
34. Surface Embroidery
37. Counted Thread – Other than Cross Stitch (Black Work, Hardanger, etc.)

38. Chicken Scratch
39. Embroidery – Machine
40. Embroidery – Stencil
41. Embroidery – Ribbon
42. Liquid Embroidery
43. Pocketbook (Stitching)
44. Latch Hooking – Wall-hanging
45. Latch Hook Rugs
46. Exhibitor's Choice

### D. Section 4 – Quilted

#### Articles

*\*Quilts must be at least 60" wide and 80" in length or larger. May be quilted by hand or machine.*

*Note hand or machine on entry form.*

47. Pieced
48. Appliqué (Hand)
49. Combination Appliqué Pieced (Embroidered Whole Cloth, Stenciled, etc.)
50. Group Quilt (Name Group)
51. Novelty (Yoyo, Cathedral Crazy tied, etc.)
52. Baby or Youth 36" x 48"
53. Wall Hanging 36" x 36"
54. Quilted Pillow
55. Vest
56. Appliqué (Machine)
57. Table Runner
58. Exhibitor's Choice

